

LED Enhanced Signs



Hi-intensity LEDs increase effectiveness and visibility - day or night significantly improving driver response time.

Provides increased safety at locations such as crosswalks, school zones, parks, playgrounds, shopping malls, and hospitals.



S1-1 School Zone Sign

Two 4-inch amber LEDs, one at each side; or five 2-inch amber LEDs, one at each corner.



R1-1 Stop Sign



W11-2 Pedestrian Crossing Sign

Two 4-inch LEDs (above); or four 2-inch LEDs, one at each corner.



R1-6 State Law Yield to Pedestrian

Specifications

W11-2 Pedestrian Sign



Size: 30" x 30" standard, 36" x 36" optional

Face: diamond-grade fluorescent yellow-green

LEDs: two 4-inch or four 2-inch

Flash Pattern: wigwag or pulsed flash

High intensity LEDs increase the sign's visibility, day or night. If an optional photo detector is installed with the sign, it will dim automatically based on ambient lighting conditions.

Diamond-grade fluorescent yellow-green front increases reflective brightness, providing visibility up to 200 yards away.

All signs are AC or solar powered (sized to your location).

S1-1 School Zone Sign



Size: 30" x 30" standard, 36" x 36" optional

Face: diamond-grade fluorescent yellow-green

LEDs: two 4-inch or five 2-inch

Flash Pattern: wigwag or pulsed flash

As part of the LaneLight system, signs are connected and powered through a LaneLight Controller - requiring no additional power source.

All signs come with a 1-year warranty.

R1-1 Stop Sign



Size: 30" x 30" standard, 36" x 36", or 48" x 48" optional

Face: hi-intensity reflective red

LEDs: eight 2-inch

Flash Pattern: pulsed flash



Universal Mounting Bracket

Supplied with all signs for easy installation. For banding, strapping or bolting of signs to poles, street lights, etc.

R1 - 6 Pedestrian State Law Sign

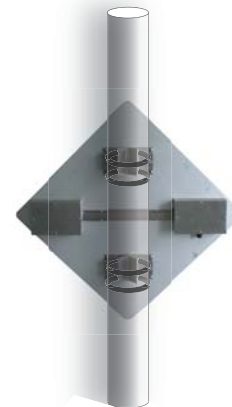


Size: 12" x 36" standard, 24" x 48" optional

Face: diamond-grade fluorescent yellow-green & white

LEDs: six 2-inch

Flash Pattern: pulsed flash



Back of sign with mounting brackets attached to pole



Contact us today for more information:

1-866-466-4836 or visit
www.itemltd.com